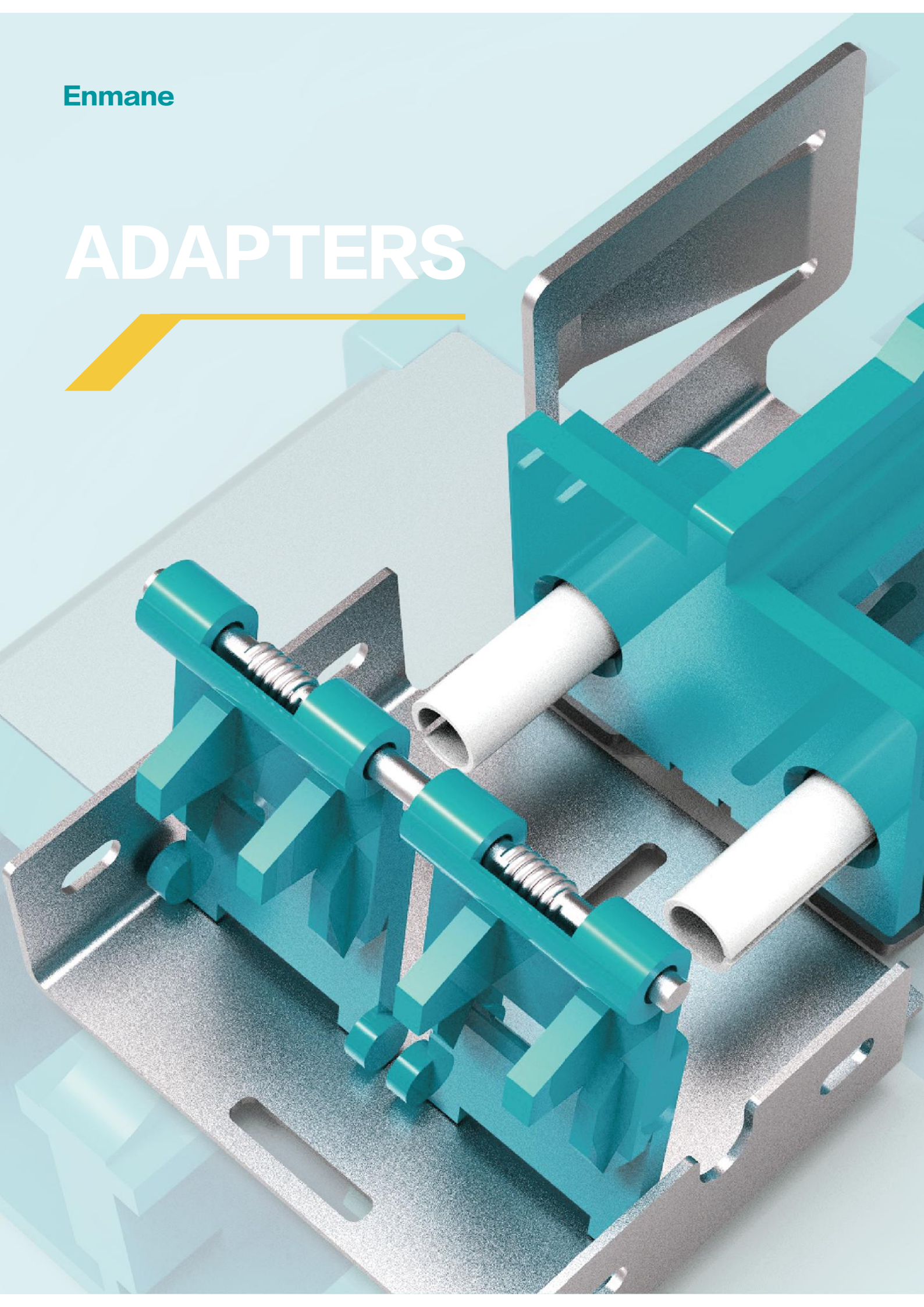
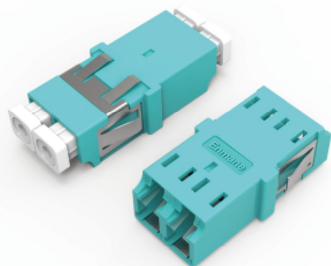


Enmane

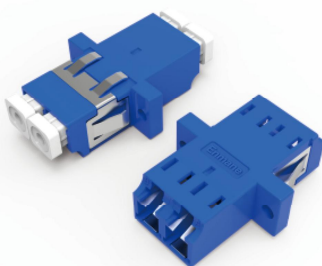
ADAPTERS





EM-IZU1901-01

Internal metal shutter
With grade a ceramic sleeve
Unibody housing
Triple sides tight fix clip
Customized LOGO available



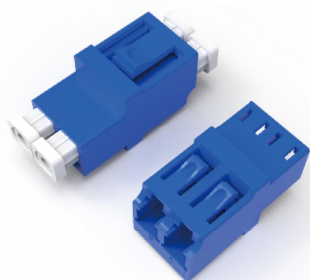
EM-IZU1902-01

Internal metal shutter
With grade a ceramic sleeve
Unibody housing
Triple sides tight fix clip
Customized LOGO available



EM-UZU1903-01

Up-Down clip
With grade a ceramic sleeve
Unibody housing
Design for SP series cassette
Customized LOGO available



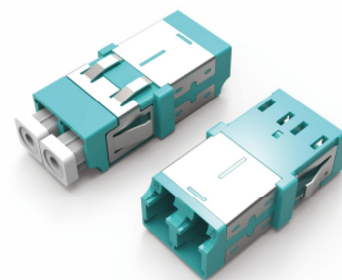
EM-UZU1904-01

Up-Down clip
With grade a ceramic sleeve
Unibody housing



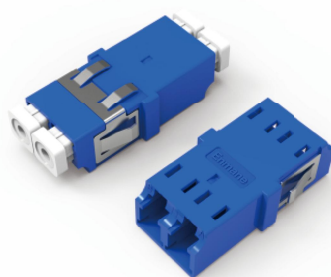
EM-UZU1905-01

Up-Down clip
Inner shutter
With grade a ceramic sleeve
Unibody housing



EM-IZU1906-01

Inner Shutter
With grade a ceramic sleeve
Unibody housing
Triple sides tight fix clip



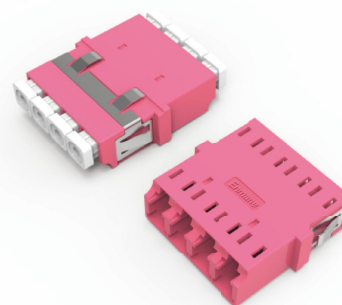
EM-WZU1907-01

With grade a ceramic sleeve
Unibody housing
Triple sides tight fix clip
Customized LOGO available



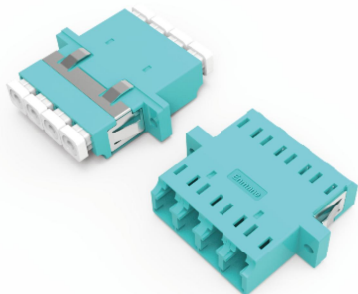
EM-WZU1908-01

With grade a ceramic sleeve
Unibody housing
Triple sides tight fix clip
Customized LOGO available



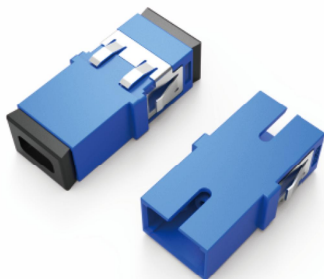
EM-WZU1909-01

With grade a ceramic sleeve
Unibody housing
Triple sides tight fix clip
Customized LOGO available



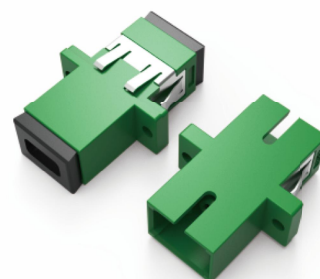
EM-WZU2001-01

With grade a ceramic sleeve
Unibody housing
Triple sides tight fix clip
Customized LOGO available



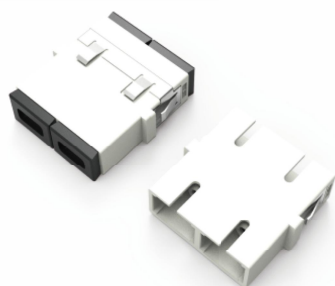
EM-WZU2002-01

With grade a ceramic sleeve
Unibody housing
Triple sides tight fix clip
Customized LOGO available



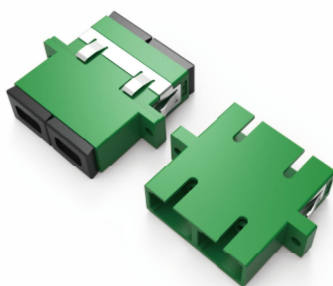
EM-WZU2003-01

With grade a ceramic sleeve
Unibody housing
Triple sides tight fix clip
Customized LOGO available



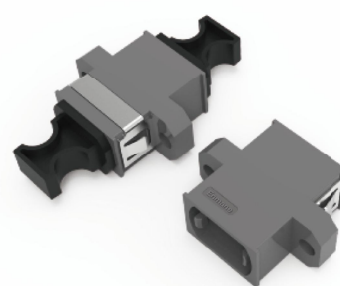
EM-WZU2004-01

With grade a ceramic sleeve
Unibody housing
Triple sides tight fix clip
Customized LOGO available



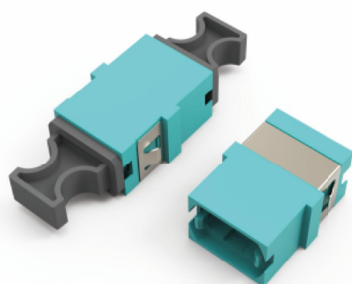
EM-WZU2005-01

With grade a ceramic sleeve
Unibody housing
Triple sides tight fix clip
Customized LOGO available



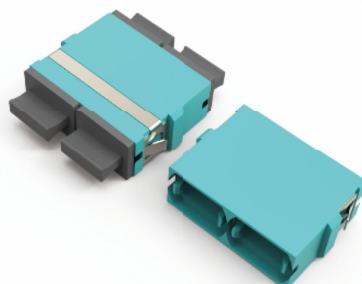
EM-CZU2006-01

Compatible with all MPO/MTP adapters
Unibody housing
Customized LOGO available



EM-CZU2007-01

Compatible with all MPO/MTP adapters
Unibody housing
Customized LOGO available



EM-CZU2008-01

Compatible with all MPO/MTP adapters
Unibody housing
Customized LOGO available



EM-CZU2009-01

Compatible with all MPO/MTP Connector
Switchable polarity
Triple sides tight fix clip
Customized LOGO available



EM-SZU2102-01

Square/Diamond/Double D/Single D optional
Metal housing with strong reliability
All copper/zinc alloy optional
With grade a ceramic sleeve



EM-MZU2103-01

Metal housing with strong reliability
-40~85°C working environment
All copper/zinc alloy optional
With grade a ceramic sleeve